

www.nextraction.com

TSXV: NE

Corporate Presentation

March 2011

The logo for Nextraction energy features the word "Nextraction" in a bold, black, sans-serif font. A blue, curved line starts from the left, loops around the letter 'x', and extends to the right. Below "Nextraction", the word "energy" is written in a blue, lowercase, sans-serif font.

Nextraction
energy

The NEXT round of extraction on known plays

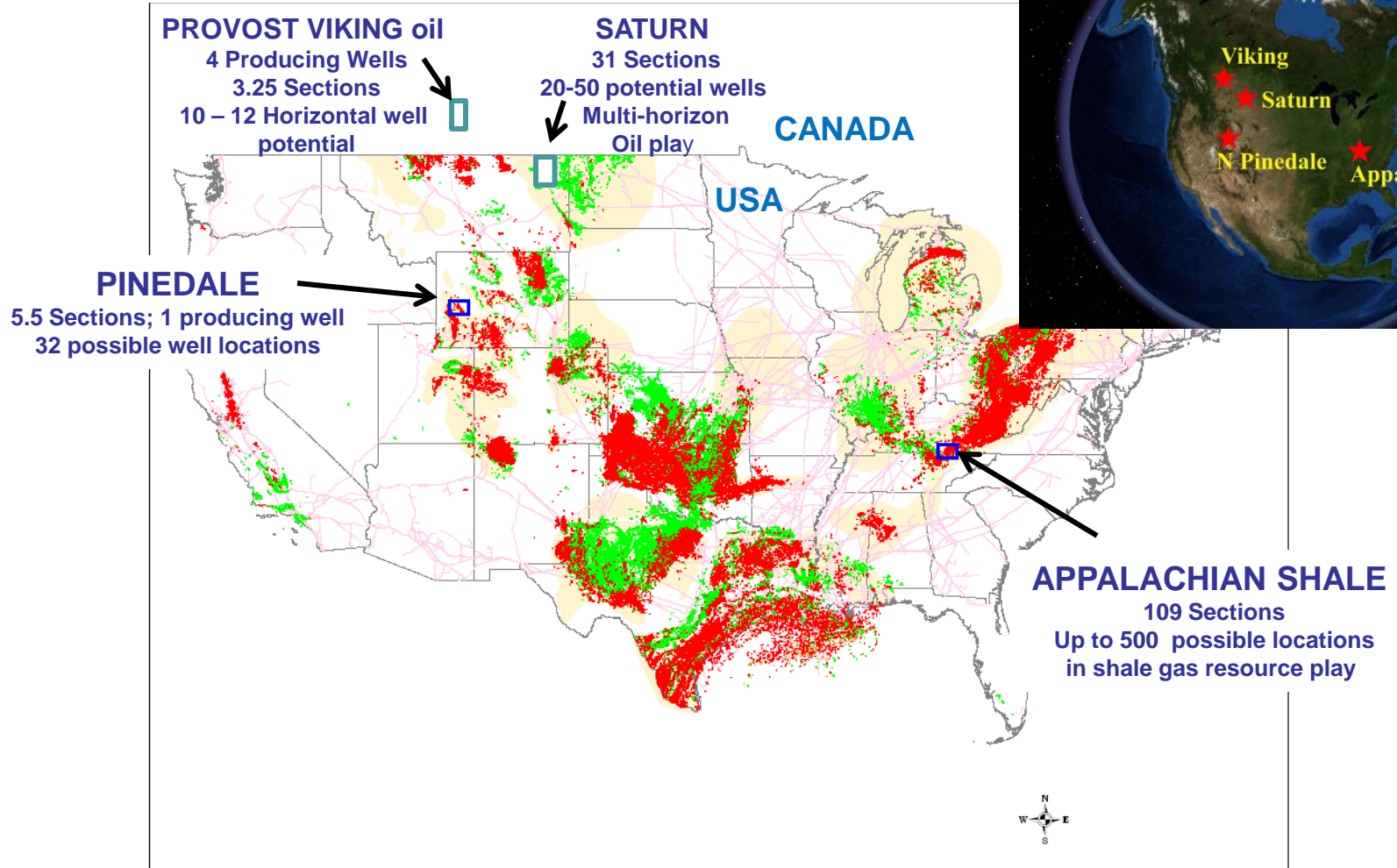
•DISCLAIMER

The information contained in this presentation is confidential. The contents are not to be reproduced or distributed to any third party, including the public or press. The information contained herein, while obtained from sources which we believe are reliable, is not guaranteed as to its accuracy or completeness. The contents of this presentation are for informational purposes only and do not constitute an offer to sell or a solicitation to purchase any securities referred to herein.

•FORWARD LOOKING STATEMENTS

Certain statements in this document may contain “forward-looking statements” or “forward-looking information” within the meaning of applicable securities legislation (together, “forward-looking statements”). Such forward-looking statements include, without limitation, forecasts, estimates, expectations and objectives for future operations that are subject to a number of assumptions, risks and uncertainties, many of which are beyond the control of Nextraction Energy Corporation (the “Company”). Often, but not always, forward-looking statements may be identified by the use of words such as “plans”, “expects” or “does not expect”, “is expected”, “budget”, “scheduled”, “estimates”, “forecasts”, “intends”, “anticipates” or “does not anticipate”, or “believes” or variations of such words and phrases or words and phrases that state or indicate that certain actions, events or results “may”, “could”, “would”, “might” or “will” be taken, occur or be achieved. Forward-looking statements are subject to all of the risks and uncertainties normally incident to the exploration for and development and production of oil and gas. These risks include, but are not limited to, volatility of market prices for oil and gas, the results of exploration and drilling related activities, foreign currency exchange rates, uncertainties with respect to estimating oil and gas reserves, uncertainties relating to operational issues with regard to partners, inflation or lack of availability of goods and services, environmental risks, drilling risks and regulatory changes. Investors are cautioned that any such statements are not guarantees of future performance and that actual result of developments most likely will differ materially from those projected in the forward-looking statements. Such forward-looking statements represent management’s best judgment based on information currently available. No forward-looking statement can be guaranteed and actual future results may vary materially. The Company does not assume the obligation to update any forward-looking statement, except as required by applicable law.

Company Assets



Corporate Management

- **Mark S. Dolar, President & CEO**
 - 30 years of experience in developing oil and gas reserves
 - Discovered 2.5 trillion cubic feet of gas
 - Industry leader in corporate governance
- **Paul D. Trost, PhD, Chief Operations Officer**
 - Over 35 years experience in exploration and production
 - 20 + years as Independent Operator
 - Patented inventor of oil field equipment and published author
- **Kent Edney, Operations Manager and Petroleum Engineer**
 - 8 years of experience in field as drilling and production supervisor
 - Expert in application of new completion technologies
 - Area Engineer with Breaker Energy Ltd / Experience Drilling Viking
 - Production Engineer with Surge Energy
 - Increased production rates by 400%+ in previous positions

Share Structure March, 2011

Issued and Outstanding Shares	26,194,864
Warrants (3/29/11 @ \$1.25)	2,120,000
Stock Options	2,140,000
Fully Diluted Shares	30,454,864
Current Share Price	~ \$1.02
Current Market Cap	~ \$26.7 MM
Treasury	\$3.9 MM

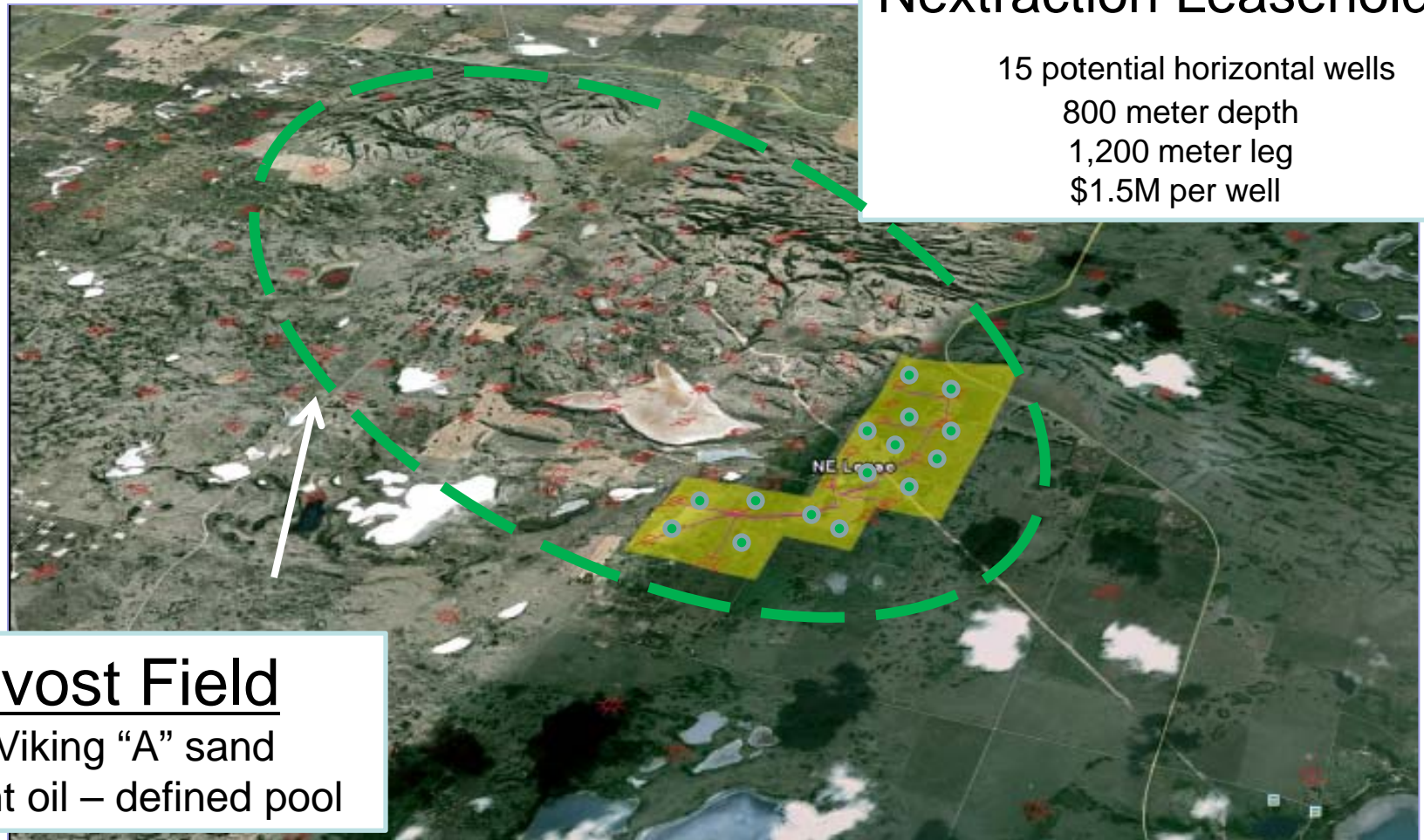
Nextraction Energy is a debt free, tightly held company

Provost Oil Project – Alberta, Canada

- Cost: \$2.8 million –Magnum Energy (JV Partner) pays 50% out of production
- Nextraction`s Calgary-based Petroleum Engineer, Kent Edney, experienced at drilling Viking formation
- Viking A Formation – Vertical wells have produced up to 300,000 barrels of oil per well
- Viking A Oil Pool - 80 million barrels of oil in place, only 3 million recovered over past 20 years – primarily from vertical wells*
- Nextraction JV accounts for approximately 15% of lands covered in the Viking A Pool identified in McDaniels Consultants report.*

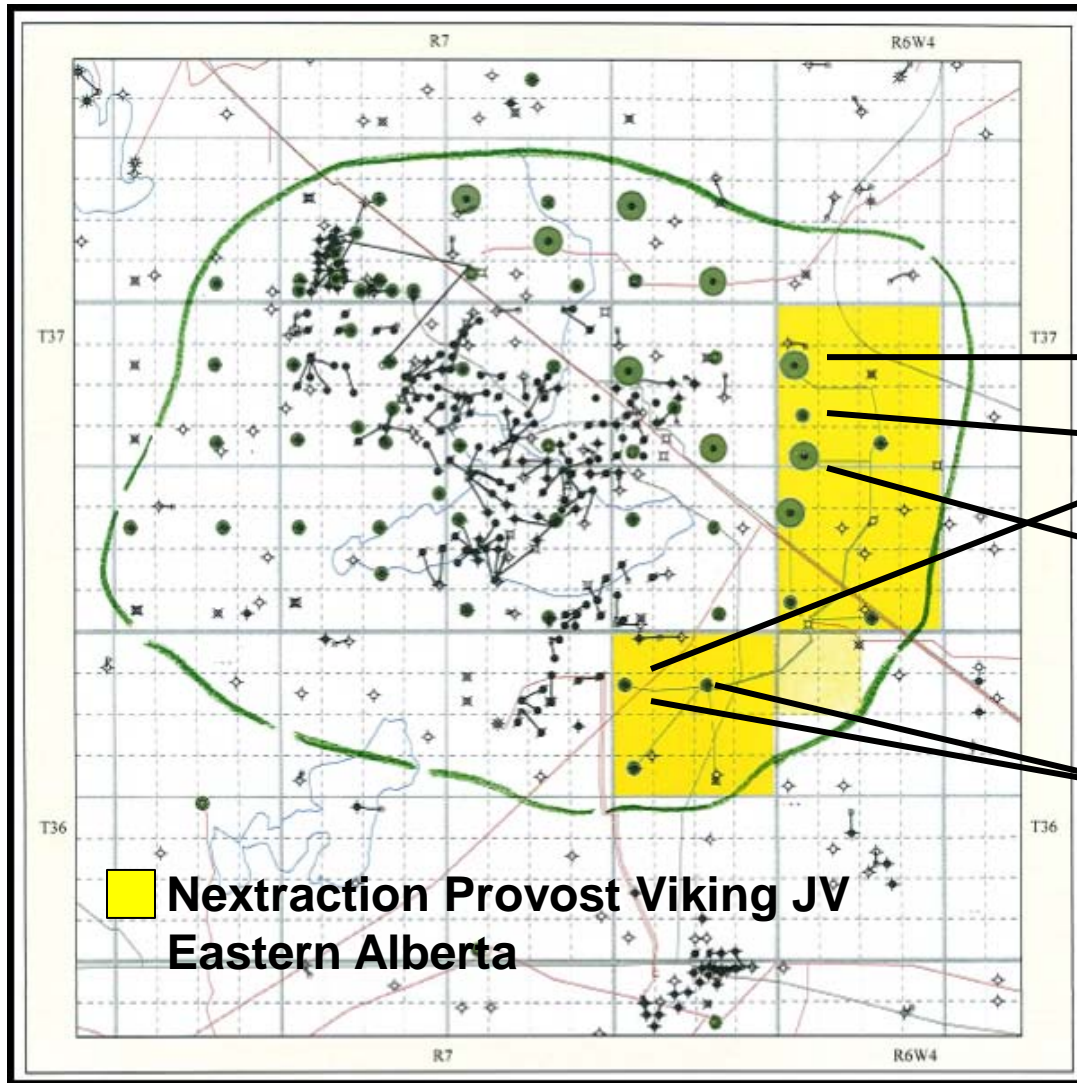
Nextraction Leasehold

15 potential horizontal wells
800 meter depth
1,200 meter leg
\$1.5M per well



Provost Field

Viking "A" sand
Light oil – defined pool



Provost Field Defined Pool

- 80 million barrels of oil in place*
- 3 million barrels of oil produced to date*

297,000 barrels of oil

Well Recompletions to increase production

240,000 barrels of oil

Positive Conventional Wells

•McDaniels Consultants Unitization Study, submitted to ERCB, 1968

Provost Viking “A” Oil Pool – Alberta, Canada

Acquisition includes 4 Producing Wells:

- Less than 5% of oil in place has been produced
- Cumulative to date: 665 thousand barrels of oil
- Daily Average Production: 30 barrels of oil/day
- Evaluating Opportunity to Increase Production Volumes of Existing Wells with Recompletions using Modern Fracing Techniques

Development / Potential:

- 3.25 sections of undeveloped leasehold in defined pool
- Potential to drill an additional 10 – 15 Horizontal Wells
- 18 adjacent sections available for lease

North Pinedale Project – Sublette Co., WY

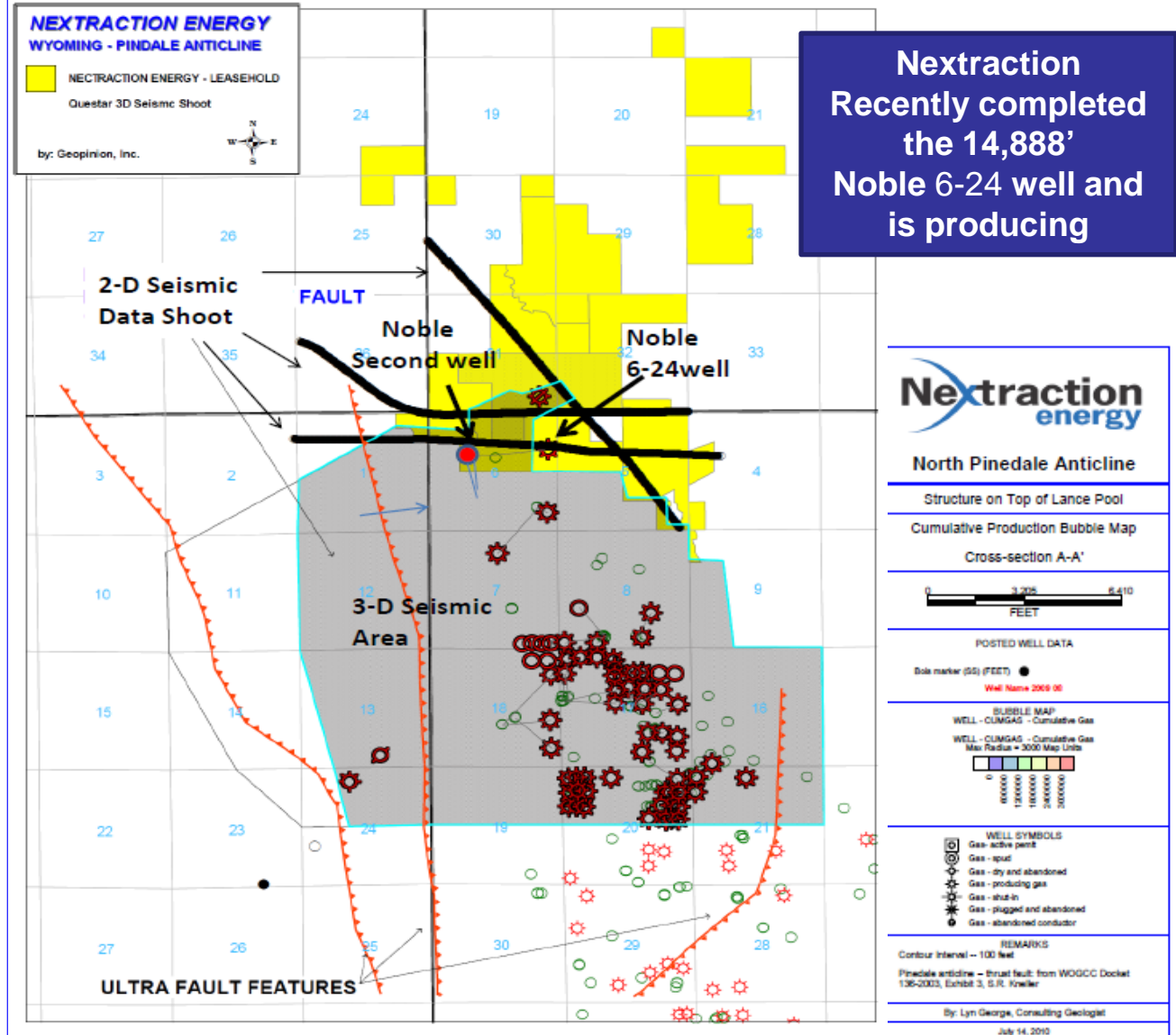
- 100% interest in two wells with 150% revenue for payout, then 76% working interest
- 100% interest in 1600 acres, 25% interest in 2500 acres
- P2 reserves of 5.3 BCFGE; P3 reserves of 80 BCFGE*
- 40 year life reserves
- 30+ wells on 20 acre spacing

*Based on reserves projected by MHA Associates, Inc in National Instrument 51-101 technical report dated April 1, 2010

North Pinedale Anticline

- Completed a 20 multi-stage frac
- Over 800 Feet of Net Pay
- Combined IP of 4 Million Cubic Feet of Gas + 30 Barrels of Condensate Per Day
- Acquired 3-D Seismic, Commencing 2-D Seismic Program

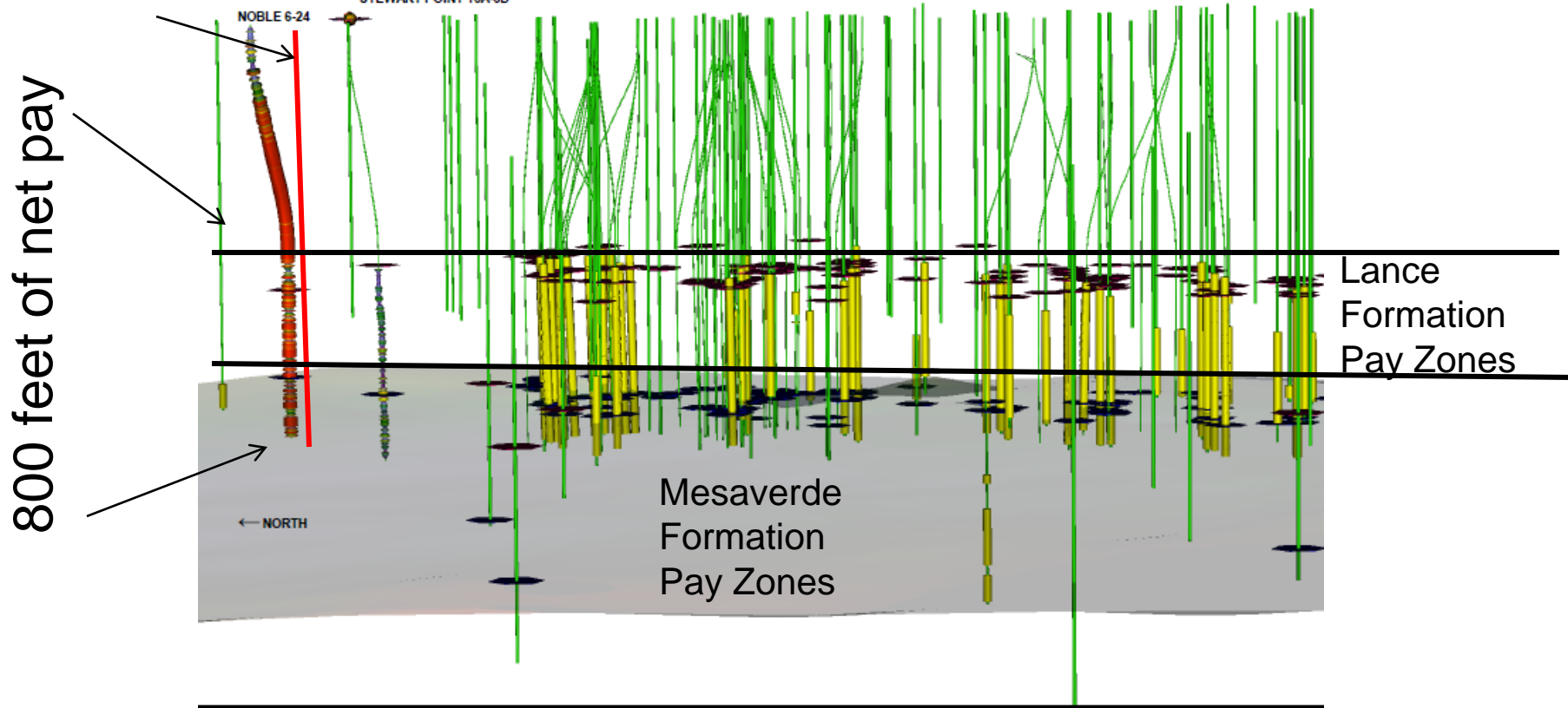
Nextraction Recently completed the 14,888' Noble 6-24 well and is producing



Subsurface Well Delineation

Development moves in northerly direction on
5 to 20 acre spacing

New location



800 feet of net pay

HS R STEELE 16-31
NOBLE 6-24
STEWART POINT 16A-6D

Lance
Formation
Pay Zones

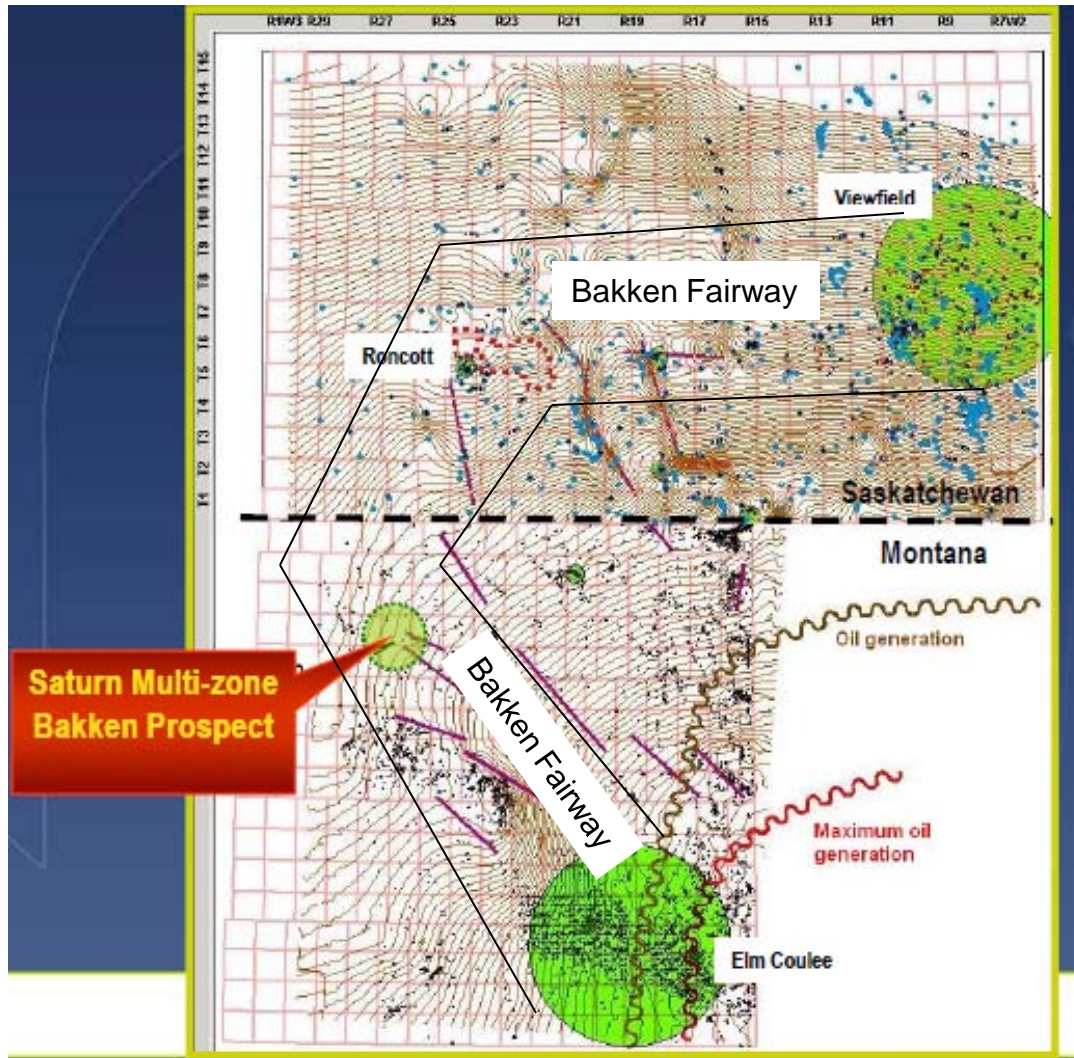
Mesaverde
Formation
Pay Zones

← NORTH

NORTH PINEDALE ANTICLINE

Saturn Oil Project – Daniels Co. MT

- Seismic Farm in Agreement
- 3-D Seismic \$1 million (75% Nextraction / 25% Primary Petroleum)
- Drilling program
 - 1st well after Seismic \$1.2M to drill, core and produce
 - 4 potential oil producing reservoirs including Bakken
 - Earn 100% of 2 sections with well
 - Earn 100% of revenue until payout; 70% after payout
 - Drill new well every 90 days.
- Vertical wells \$1.2 M
- Horizontal wells \$3.00M



Map Source – Primary Petroleum

SATURN OIL PROJECT

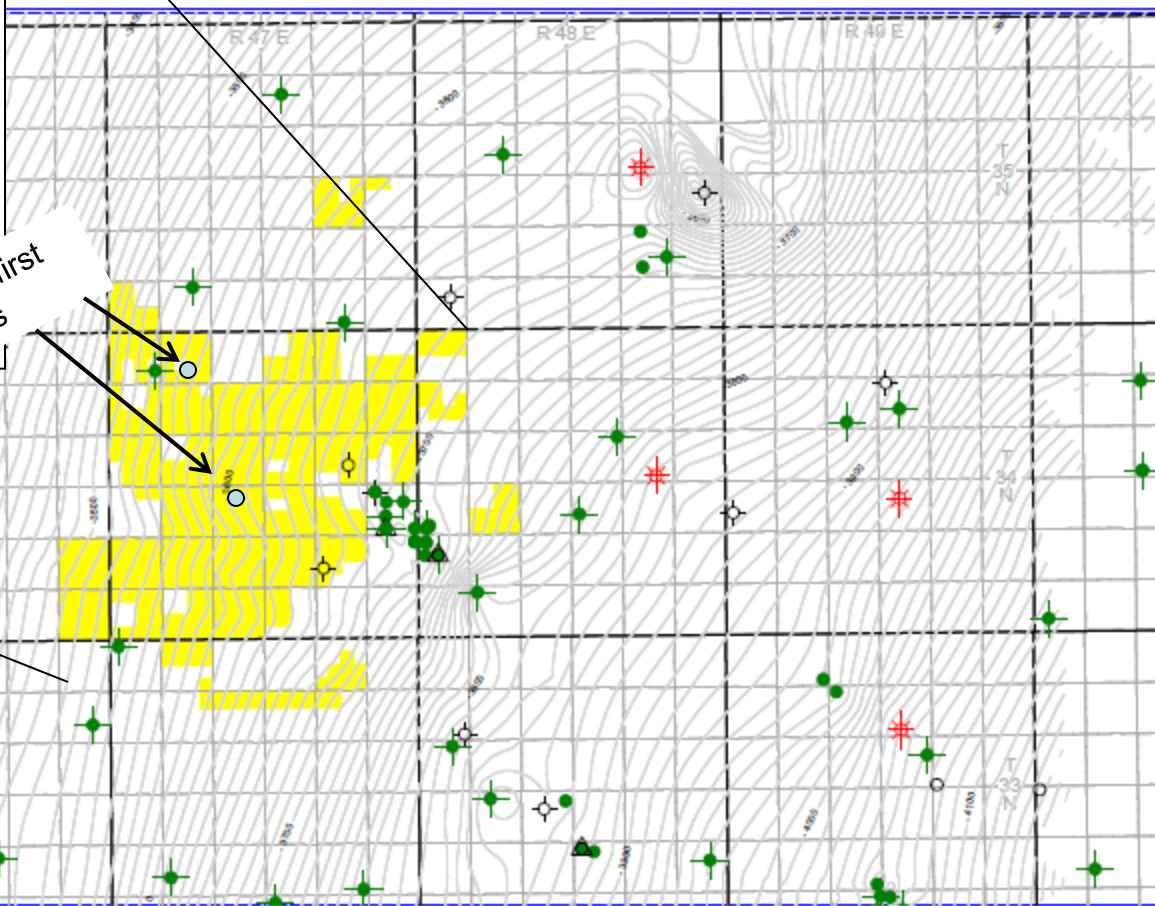
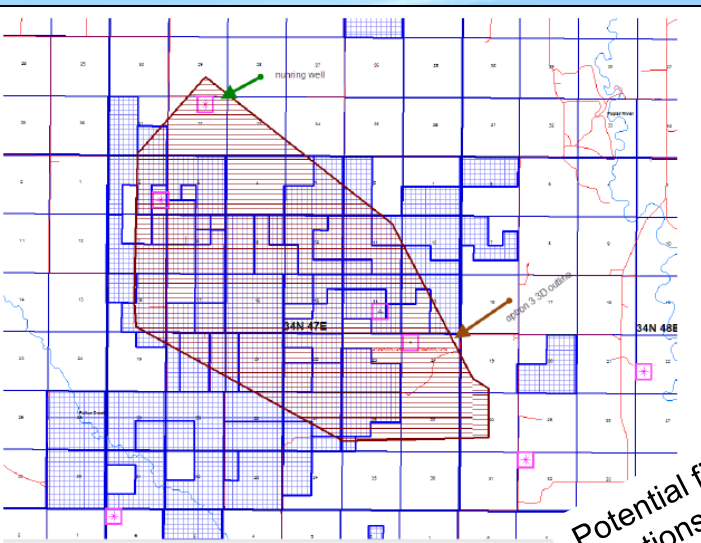
Daniels Co., MT

**Joint Venture with
Primary Petroleum**

3-D Seismic in Q2 2011
Followed by Test Well
Multi-Horizon potential

- Bakken
- Ratcliffe
- Madison
- McGowan
- Mission Canyon

Saturn Leasehold Position and 3-D Seismic Outline

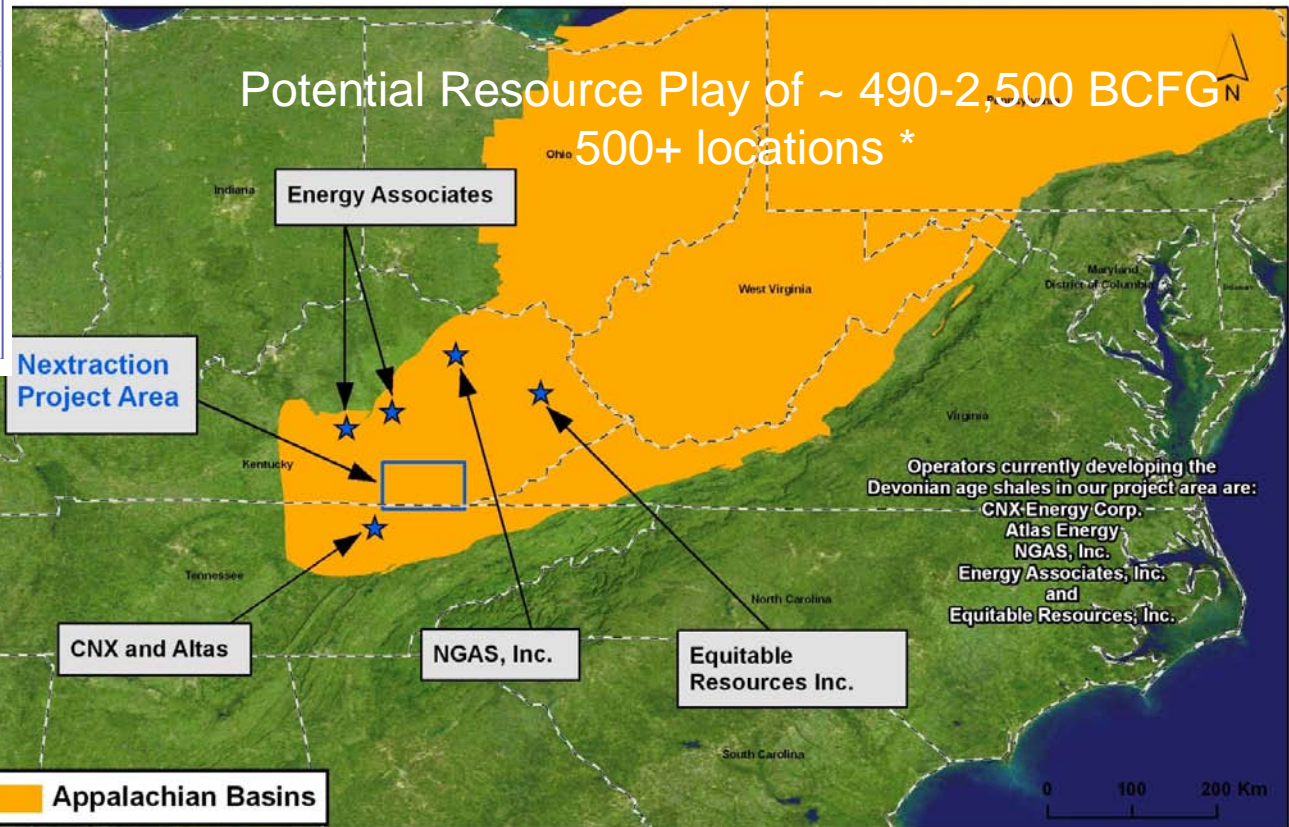
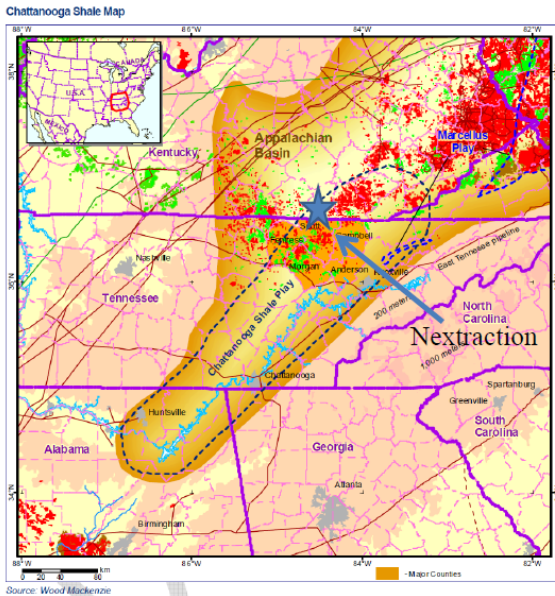


Appalachian Basin Project – Kentucky and Tennessee

- 100% interest in 25 wells until payout; 75%-65% interest after payout
- Over 500 locations on 70,000 acres
- Multi-horizons, long life reserves
- Sells into NYMEX market place
- Undiscovered gas resource of 400-2,500 BCFGE*

*Based on reserves projected by MHA Associates, Inc in National Instrument 51-101 technical report dated April 1, 2010

APPALACHIAN BASIN SHALE GAS PROJECT



Kentucky and Tennessee, USA

* MHA Associates Inc. technical report dated effective 4-1-2010

Nextraction's theme for growth:

Find the Next Round of Extraction on Known Plays

Nextraction's Mission Statement:

Generate Shareholder Value through organic growth by applying our competitive advantage in identifying, drilling, completing and producing oil and gas reserves

Nextraction's Criteria:

*Generate better than 25% IRR
Low Risk, high return where technological advances apply*

Nextraction in 2011

	Q1	Q2	Q3	Q4
Pinedale - Noble 6-24 Initial Flow Rate 3 Million CFG/D	✓			
Provost - Nextraction Acquires Alberta Viking Oil JV	✓			
Pinedale - NE Acquires 3-D Seismic, Initiates 2-D Seismic	✓			
Provost - Recomplete 2 Viking Vertical Wells				
Provost - Permit Four / Drill Two Viking Horizontal Wells				
Saturn - Seismic Complete				
Pinedale - Seismic Complete				
Saturn - Drill Core Well on Multi-Horizon Bakken JV				
Saturn - Core Analysis on Well				
Pinedale - Drill Noble 6-24 Off-Set Well at				
Saturn - Drill 2nd Well				

Nextraction 2012 Strategic Plan

Development

2012

Provost Viking Oil JV	\$7 million	→			
Saturn Multi-Horizon Bakken JV	\$7 million	→			
Pinedale Natural Gas/Condensates	\$7 million	→			
Appalachian Shale Project	Maintenance/ Standy-by	→			

SUMMARY

Current Production Provost-Viking (Alberta)

- Oil 30 b/day

Current Production Pinedale (Wyoming)

- Natural Gas 800,000 cubic feet of gas / day
- Condensate 30 b / day

Aggregate cash flow \$120,000 / month (55% oil)

- 2011 ... Growth Plan is Clear and Funded
- 2012 ... Develop Large Scale with Existing Assets

Nextraction Energy Corp.
550 Burrard Street, Suite 328
Vancouver, B.C., Canada V6C 2B5

Company Contact:

Daniel Gibbons

Manager, Corporate Relations

Phone: (604) 630-0300

Cell: (604) 737-9021

dgibbons@nextraction.com

Investor Relations Contact:

Sequoia Partners, LLC

Phone: (604) 601-5614

Don Graham Cell: (778) 558-4310

James Beesley Cell: (778) 389-7715

don@sequoiapartners.ca

james@sequoiapartners.ca

